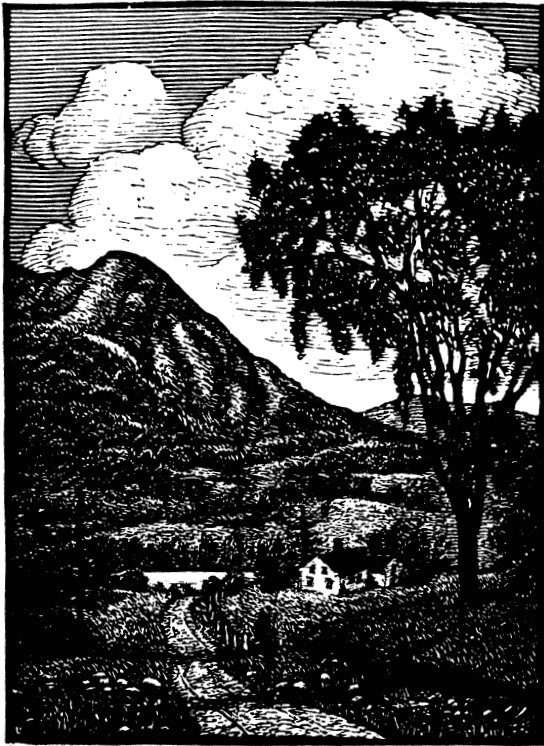


# ATTENTION

New Hampshire  
Fourth Grade  
Teachers and Students!



2 ♦ 0 ♦ 1 ♦ 1

ROBERT FROST  
YOUTH POET  
PROGRAM

## PROGRAM DESCRIPTION

It was New Hampshire that inspired Robert Frost to create much of his poetry. Its rich history, natural beauty and remarkable people inspire all of us in unique ways.

The Robert Frost Youth Poet Program offers New Hampshire fourth grade students in public and private schools the opportunity to express their feelings about New Hampshire in a poem. The sponsors of the program hope to increase appreciation of our state's natural and cultural resources, and also hope to encourage students to discover the poet in themselves.

The Robert Frost Farm State Historic Site and National Historic Landmark is located on Route 28 in Derry, New Hampshire. This was the home of Robert L. Frost and his family from 1900 to 1909. On the property are many sites Frost wrote about in his poetry, including "Mending Wall," "Hyla Brook," and "The Pasture."



## 2011 ROBERT FROST YOUTH POET PROGRAM

— *Entry Form* —

School \_\_\_\_\_

Address \_\_\_\_\_

County \_\_\_\_\_

Phone \_\_\_\_\_

Teachers \_\_\_\_\_

Total number of participants. (A participant is defined as any student who wrote a poem. The number entered in the box equals the number of Certificates of Participation that will be sent to your school.)

I have read the attached poem(s) and verify that they are the original work of the student(s) and they reflect this year's theme: **Mountains.**

Teachers signatures

Date \_\_\_\_\_

## PROGRAM GUIDELINES

1. Encourage all of your fourth grade students to participate in the program by writing any style poem reflecting this year's theme: Mountains. We encourage students to write about mountains. Robert Frost lived in Plymouth and Franconia, and he often wrote about the mountains: "The Mountain," "Brown's Descent," "The Census-Taker," "Two Look at Two," and "The Birthplace."
2. All students who write a poem will receive a Certificate of Participation.
3. Only **one** poem per fourth grade class may be entered for state judging. The Youth Poet committee suggests asking your school's fifth grade teacher to assist with this preliminary selection.
4. **Submit selected poem and four photocopies** to the address indicated in this brochure. Photocopies must be made of the poem only.
5. The student's name must not appear on the front of the paper. On the reverse side please write the following:
  - student's name
  - teacher's name
  - name, address, county, and phone number of the school.
6. The poem must be the original work of the student and be **handwritten**. It must be no longer than one side of an 8½" x 11" sheet of paper. An illustration is welcome if both the poem and illustration fit in the allowed space, but it will not affect the judging.
7. If there is more than one fourth grade class participating from the same school, please submit selected poems together.

8. Complete and attach one entry form per school. The entry form is included in this brochure.
9. Each teacher is responsible for keeping a copy of the selected poem. Entries cannot be returned.
10. Trustees of the Robert Frost Homestead Foundation and the University of New Hampshire retain the rights to use the poems in future collections, exhibits, and publications. In all cases the author will be credited.

## AWARDS

1. All students who write a poem will receive a *Certificate of Participation*.
2. Two students from each county, titled *County and Honorable Mention Youth Poets*, will be awarded prizes for outstanding poems.
3. One student will be selected at the state winner and titled, *The 2011 Robert Frost Youth Poet*. He/she will be awarded prizes relating to Robert Frost, New Hampshire parklands, and literature. These will include:
  - mini library of Frost poetry books
4. A collection of works by New Hampshire writers will be given to the state winner's teacher.
5. An **awards ceremony** will be given to the county winners, honorable mentions, and the state winner. These poets, their families, and teachers will be notified in June.

**Location:** Robert Frost State Historic Site  
**Date:** Saturday, June 25, 2011  
**Time:** 1:00 pm

## JUDGES

The judges are members of the Pinkerton Academy English Department.

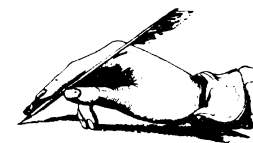
## PROGRAM SPONSORS

The Robert Frost Youth Poet Program is generously supported by an endowment from the Finisterre Fund of the New Hampshire Charitable Foundation.

Trustees of the Robert Frost Homestead Foundation

University of New Hampshire Library

State of New Hampshire Department of Resources and Economic Development—  
Division of Parks and Recreation



*For more information on the  
Robert Frost Youth Poet Program contact:*

David Watters  
Dept. of English  
University of New Hampshire  
Durham, NH 03824  
862-3983  
david.watters@unh.edu

## PLEASE SUBMIT ALL POEMS TO:

Special Collections  
UNH Library  
18 Library Way  
Durham, NH 03824-3592

POSTMARKED NO LATER THAN

Monday, May 16, 2011